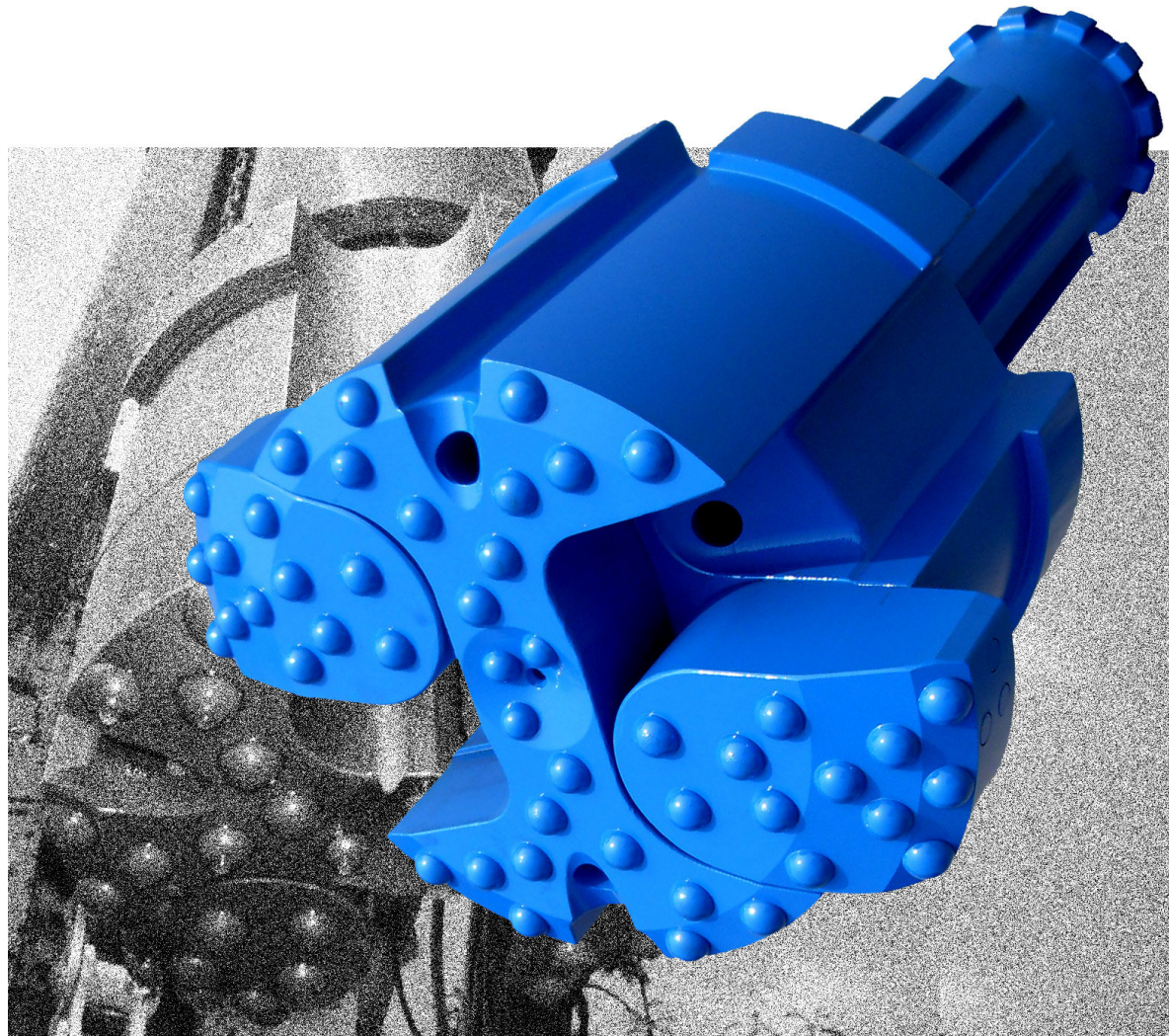


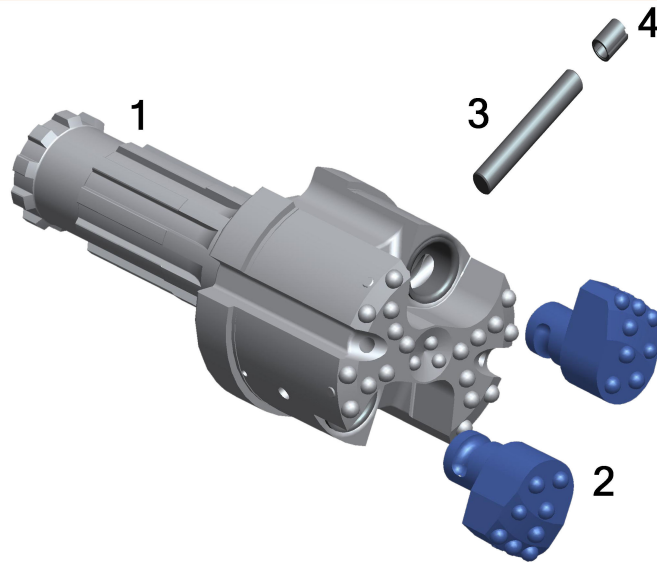
PITUMEC

THE PCON-E 280 CONCENTRIC UNDERREAMING SYSTEM



CASING SIZE 323MM OD X 302MM ID DRILLING DIA. 345MM

PNEUMEC PCON-E 280 CONCENTRIC UNDERREAMING SYSTEM



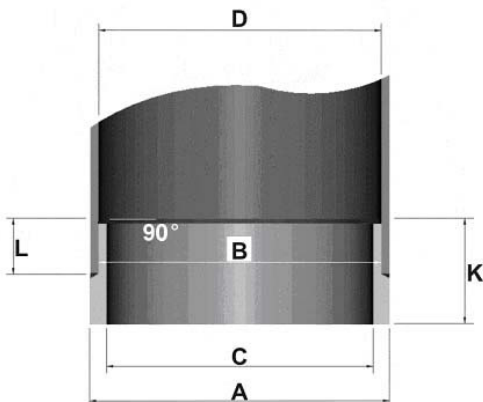
PCON-E 280 PARTS LIST

1.	DRIVER BIT SD10 SHANK	UGD280S10PCE
2.	REAMER(2)	UBS280PCE
3.	LOCKING PIN	USP28050PCE
4.	SPLIT PIN	USP28051PCE
5.	COMPLETE SYSTEM	UCS280S10PCE

PCON-E 280 SPECIFICATIONS

UPPER BODY DIAMETER	300MM	CLOSED DIAMETER	280MM
REAMING DIAMETER	345MM	CASING SIZE	323MM OD X 302MM ID
SYSTEM LENGTH	620MM	SYSTEM WEIGHT	170KG

PCON-E 280 CASING SHOES



DIA. A	323MM
DIA. B	300MM
DIA. C	283MM
DIA. D	302MM
L	55MM
K	110MM

PNEUMEC

PNEUMEC COMPANY LIMITED

1st Floor, Tin On Sing Comm. Bldg., 41-43 Graham St. Central, H.K.

Tel : (852) 2280 9922

Fax : (852) 2280 9982

Website : www.pneumec.com

email : info@pneumec.com